

COMPLIANCE SUMMARY REPORT / PRODUCT SPECIFICATIONS

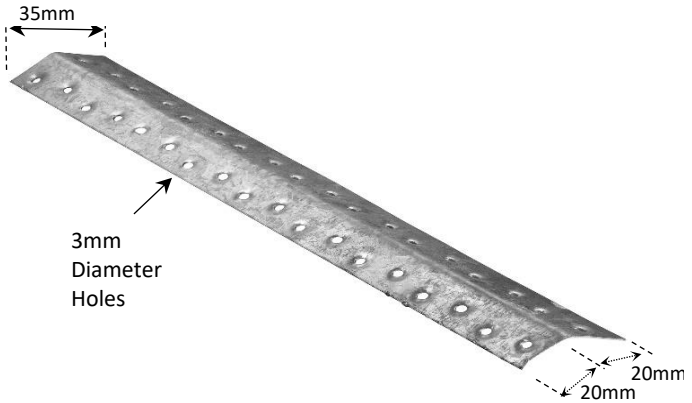
CARLAY TENSION ROOF BRACE
COMPLIES TO INSTALLATION OF NAILPLATED TIMBER ROOF TRUSSES AS 4440:2004 & AS 1684

Manufactured By

Carlay Pty Ltd
 448 The Boulevard
 Kirrawee N.S.W. 2232

Product: Codes & Lengths

86147 - 3.6 Metres
 86105 - 4.0 Metres
 86066 - 5.0 Metres
 86040 - 6.0 Metres
 Sold in bundles of 10



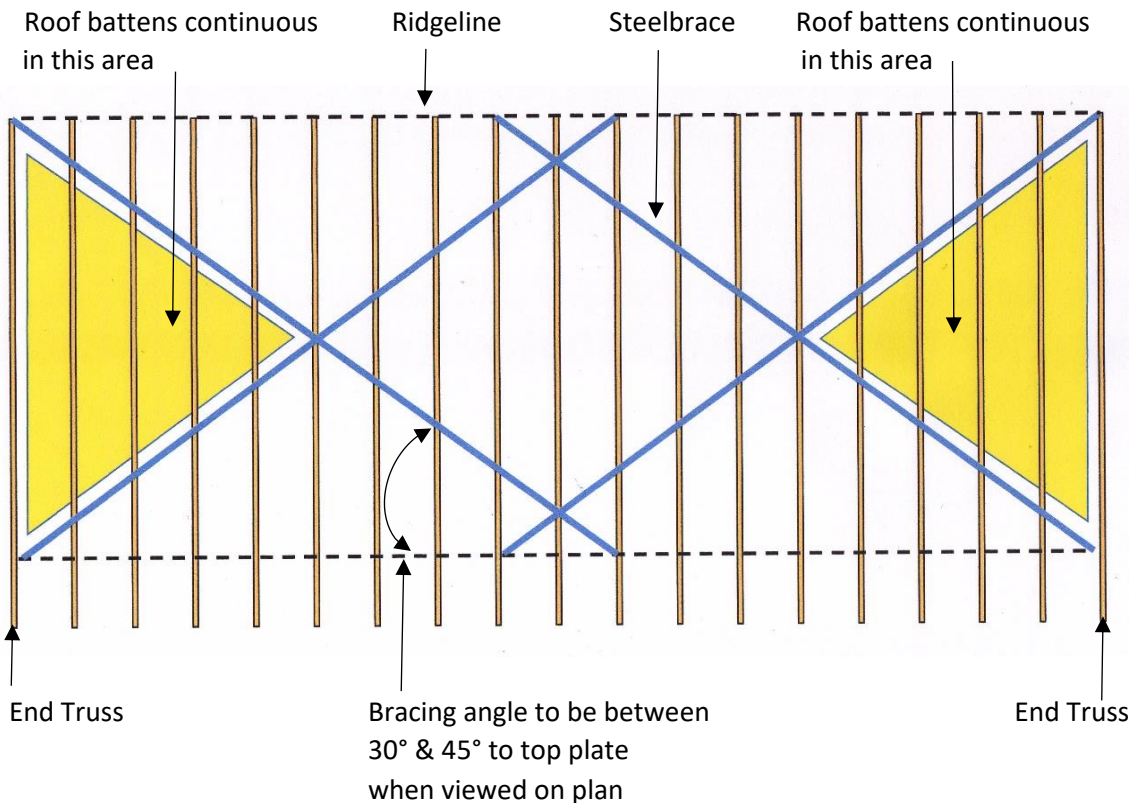
APPLICATION

Roof Brace is a tension bracing system that uses a pre-punched shallow V that is easily installed for bracing roof trusses.

SPECIFICATIONS

Galvanized Coating	Material Thickness	Design Tension Capacity
Z275	1.0mm	8.4kN
Compliance to AS 4440 - 2004 Installation of Nailplated Timber Roof Trusses		

TYPICAL BRACING LAYOUT

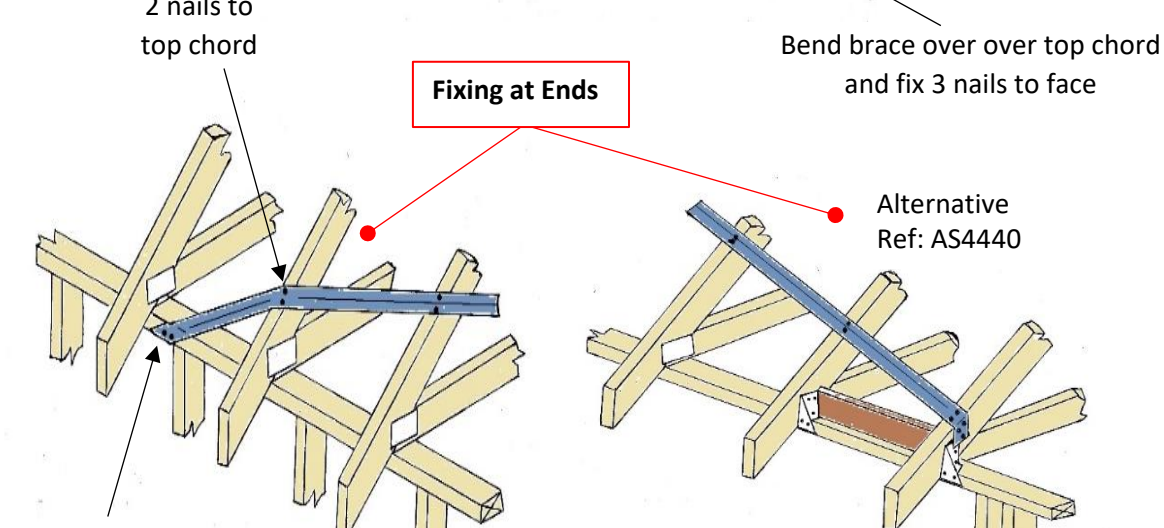
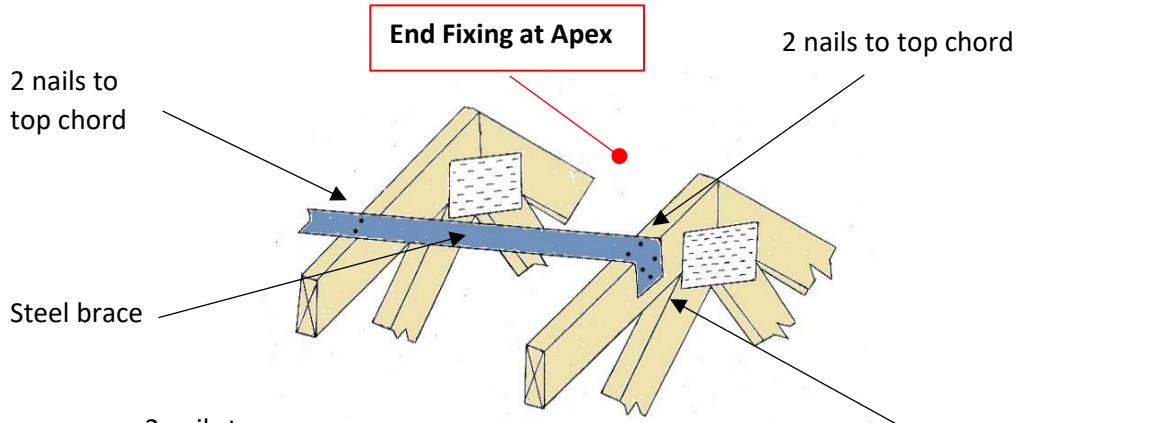


COMPLIANCE SUMMARY REPORT / PRODUCT SPECIFICATIONS

**CARLRAY TENSION ROOF BRACE
COMPLIES TO INSTALLATION OF NAILPLATED TIMBER ROOF TRUSSES AS 4440:2004 & AS 1684**

FIXING

Tension roof brace to be arranged in V-shape or X-shape configuration over the top chords as specified in AS 4440-2004 clauses 4.3.3 to 4.3.6
Fixing using a minimum of 2.8mm x 30mm reinforced-head nails.



Bend brace to side of top plate and under plate; fix 2 nails to side face & 3 nails under top plate. Nails shall be not closer than 10mm to the edge of timber.

